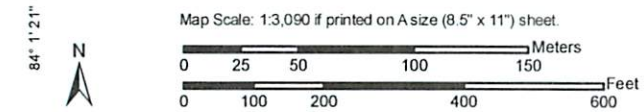


Sylvester Road Truck stop

Farmland Classification—Dougherty County, Georgia



Farmland Classification

Farmland Classification— Summary by Map Unit — Dougherty County, Georgia (GA095)				
Map unit symbol	Map unit name	Rating	Acres in AOI	Percent of AOI
EqB	Eustis loamy sand, 0 to 5 percent slopes	Farmland of statewide importance	13.1	58.7%
LMB	Lucy loamy sand, 2 to 5 percent slopes	Farmland of statewide importance	1.9	8.7%
LtA	Lynchburg sandy loam, 0 to 2 percent slopes	Farmland of statewide importance	3.6	16.0%
OeB	Orangeburg loamy sand, 2 to 5 percent slopes	All areas are prime farmland	2.0	9.0%
TuB2	Tifton sandy loam, 2 to 5 percent slopes, eroded	All areas are prime farmland	0.1	0.4%
TuC2	Tifton sandy loam, 5 to 8 percent slopes, eroded	All areas are prime farmland	1.6	7.2%
Totals for Area of Interest			22.4	100.0%

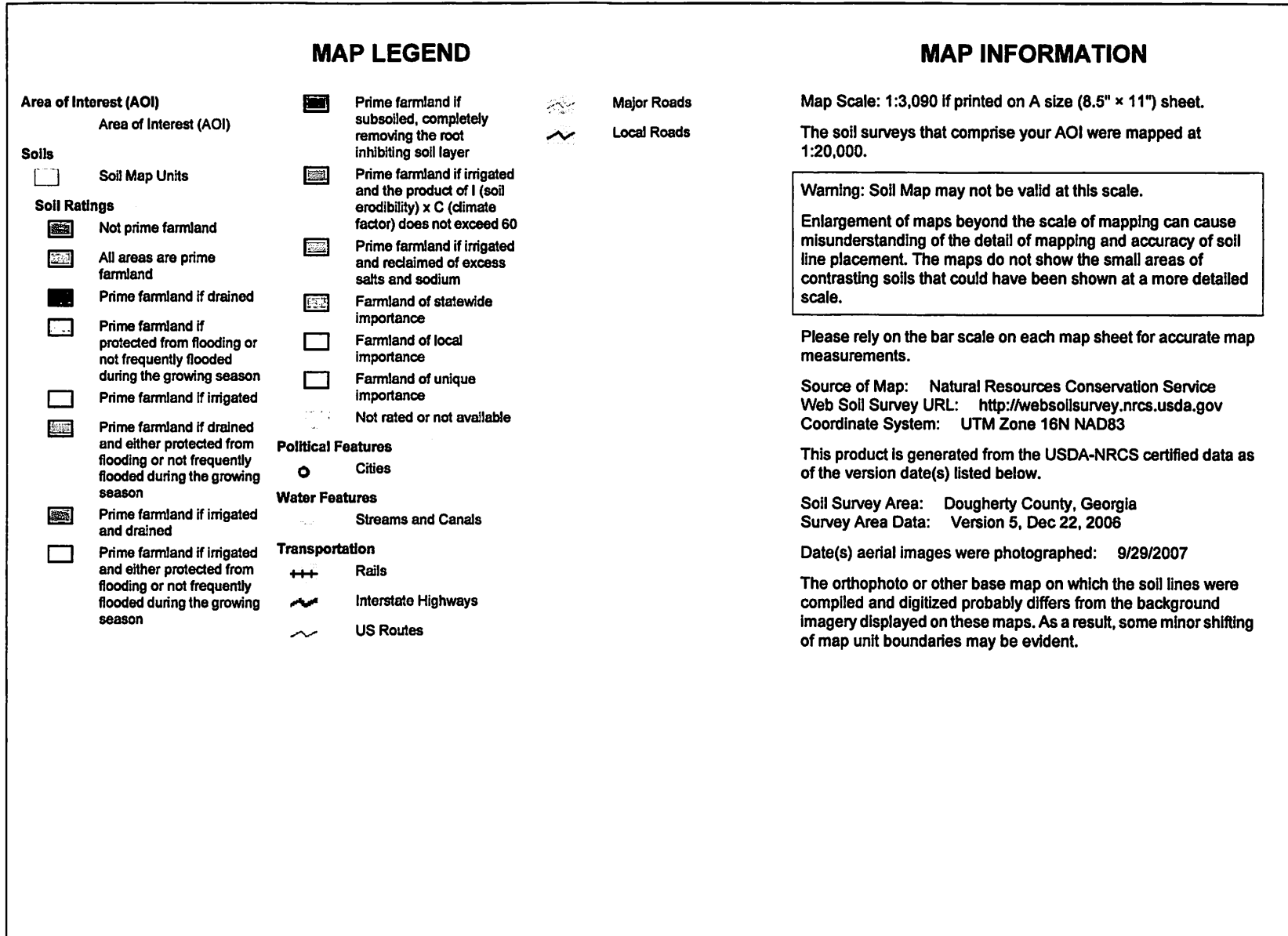
Description

Farmland classification identifies map units as prime farmland, farmland of statewide importance, farmland of local importance, or unique farmland. It identifies the location and extent of the soils that are best suited to food, feed, fiber, forage, and oilseed crops. NRCS policy and procedures on prime and unique farmlands are published in the "Federal Register," Vol. 43, No. 21, January 31, 1978.

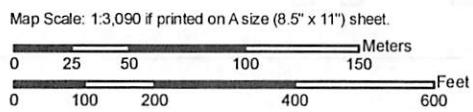
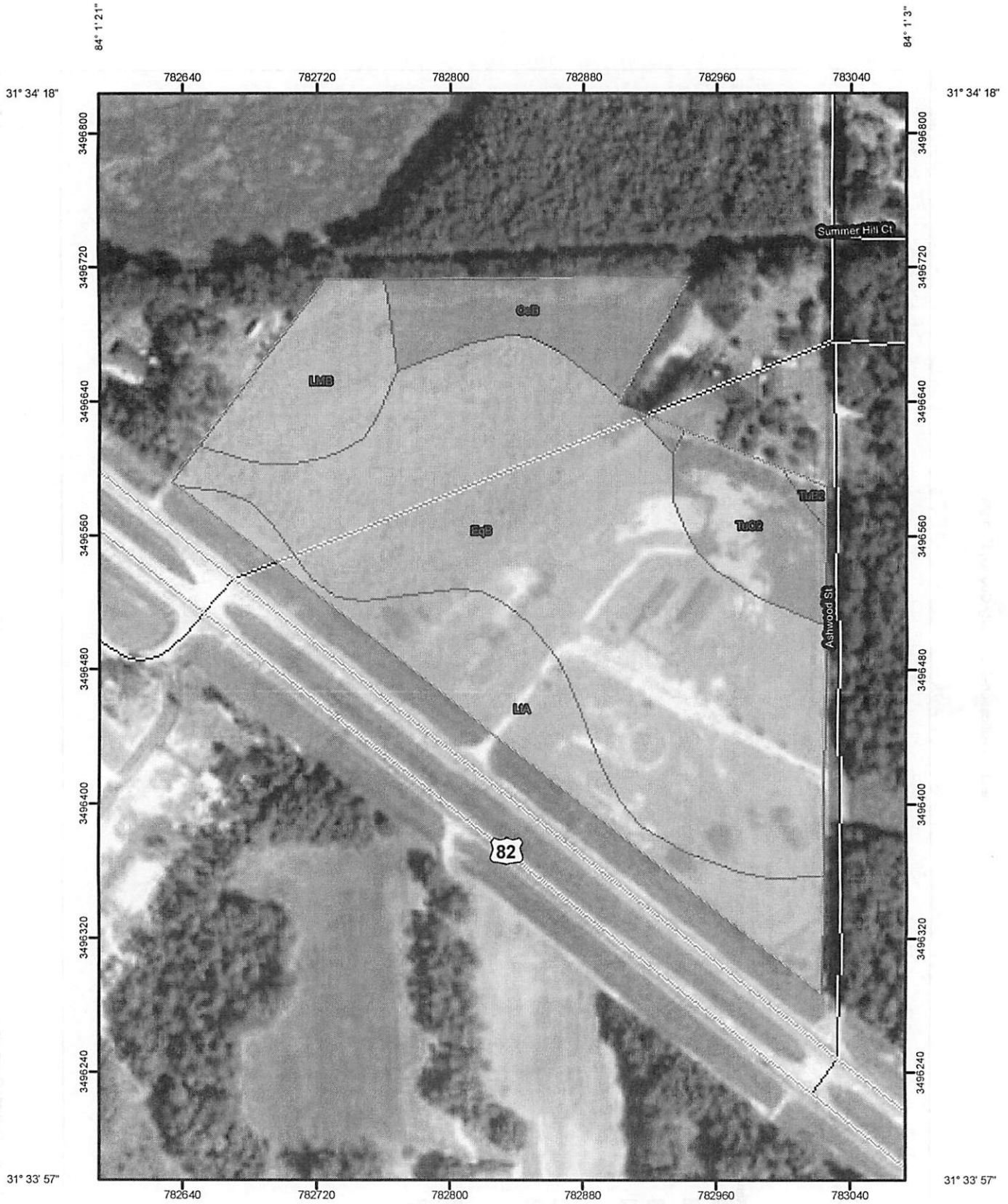
Rating Options

Aggregation Method: No Aggregation Necessary

Tie-break Rule: Lower



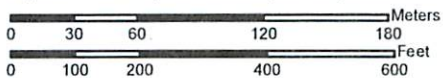
Farmland Classification—Dougherty County, Georgia



Soil Map—Dougherty County, Georgia
(TRUCKSTOP SYLVESTER D)



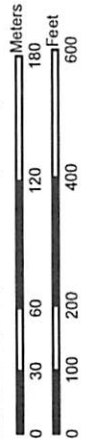
Map Scale: 1:3,400 if printed on A size (8.5" x 11") sheet.



Soil Map—Dougherty County, Georgia
(TRUCKSTOP SYLVESTER D)



Map Scale: 1:3,400 if printed on A size (8.5" x 11") sheet.



Soil Map—Dougherty County, Georgia
(TRUCKSTOP SYLVESTER D)

MAP LEGEND

Area of Interest (AOI)		Very Stony Spot
Area of Interest (AOI)		Wet Spot
Soils		Other
		Special Line Features
Soil Map Units		
Special Point Features		
Blowout		Political Features
Borrow Pit		Water Features
Clay Spot		Transportation
Closed Depression		
Gravel Pit		
Gravelly Spot		
Landfill		
Lava Flow		
Marsh or swamp		
Mine or Quarry		
Miscellaneous Water		
Perennial Water		
Rock Outcrop		
Saline Spot		
Sandy Spot		
Severely Eroded Spot		
Sinkhole		
Slide or Slip		
Sodic Spot		
Spoil Area		
Stony Spot		

MAP INFORMATION

Map Scale: 1:3,400 if printed on A size (8.5" × 11") sheet.

The soil surveys that comprise your AOI were mapped at 1:20,000.

Warning: Soil Map may not be valid at this scale.

Enlargement of maps beyond the scale of mapping can cause misunderstanding of the detail of mapping and accuracy of soil line placement. The maps do not show the small areas of contrasting soils that could have been shown at a more detailed scale.

Please rely on the bar scale on each map sheet for accurate map measurements.

Source of Map: Natural Resources Conservation Service
Web Soil Survey URL: <http://websoilsurvey.nrcs.usda.gov>
Coordinate System: UTM Zone 16N NAD83

This product is generated from the USDA-NRCS certified data as of the version date(s) listed below.

Soil Survey Area: Dougherty County, Georgia
Survey Area Data: Version 5, Dec 22, 2006

Date(s) aerial images were photographed: 9/29/2007

The orthophoto or other base map on which the soil lines were compiled and digitized probably differs from the background imagery displayed on these maps. As a result, some minor shifting of map unit boundaries may be evident.

Map Unit Legend

Dougherty County, Georgia (GA095)			
Map Unit Symbol	Map Unit Name	Acres in AOI	Percent of AOI
EqB	Eustis loamy sand, 0 to 5 percent slopes	13.8	40.3%
LMB	Lucy loamy sand, 2 to 5 percent slopes	3.6	10.6%
LpB	Lakeland sand, 0 to 5 percent slopes	0.0	0.1%
LtA	Lynchburg sandy loam, 0 to 2 percent slopes	5.3	15.5%
OeB	Orangeburg loamy sand, 2 to 5 percent slopes	7.3	21.2%
TuB2	Tifton sandy loam, 2 to 5 percent slopes, eroded	1.9	5.5%
TuC2	Tifton sandy loam, 5 to 8 percent slopes, eroded	2.3	6.8%
Totals for Area of Interest		34.3	100.0%